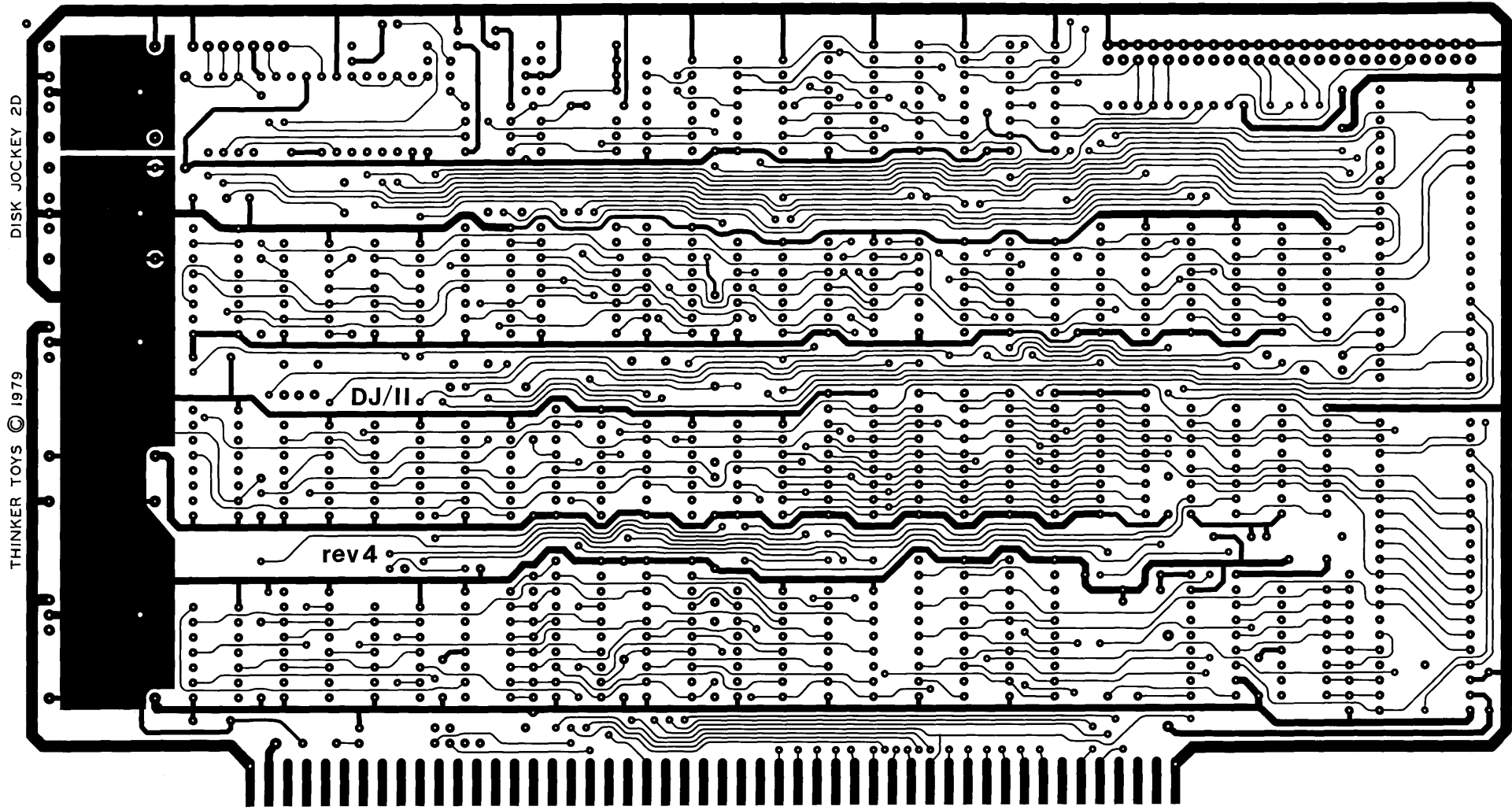


11.000



DISK JOCKEY 2D

THINKER TOYS © 1979

DJ/II

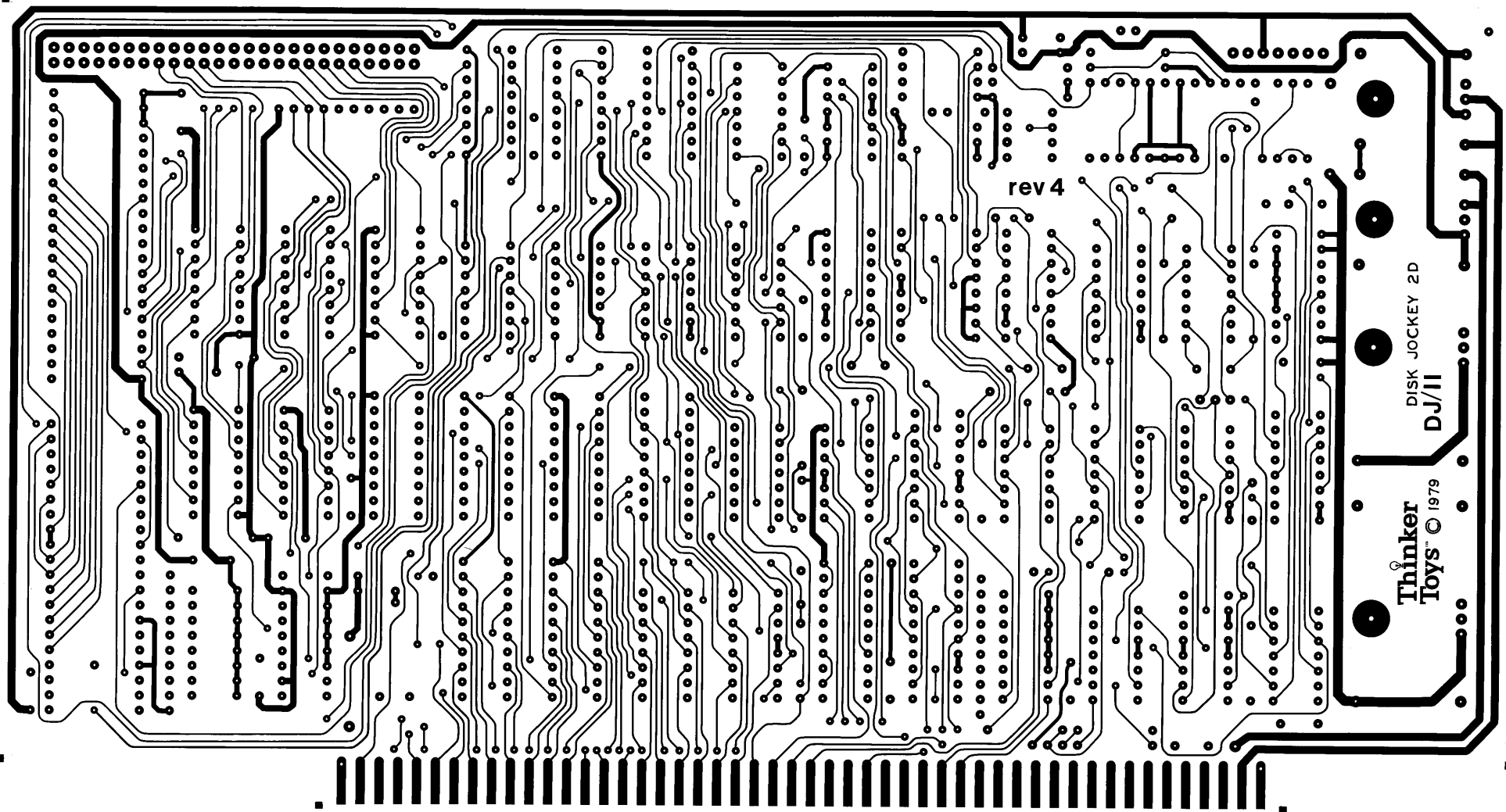
rev 4

6.000

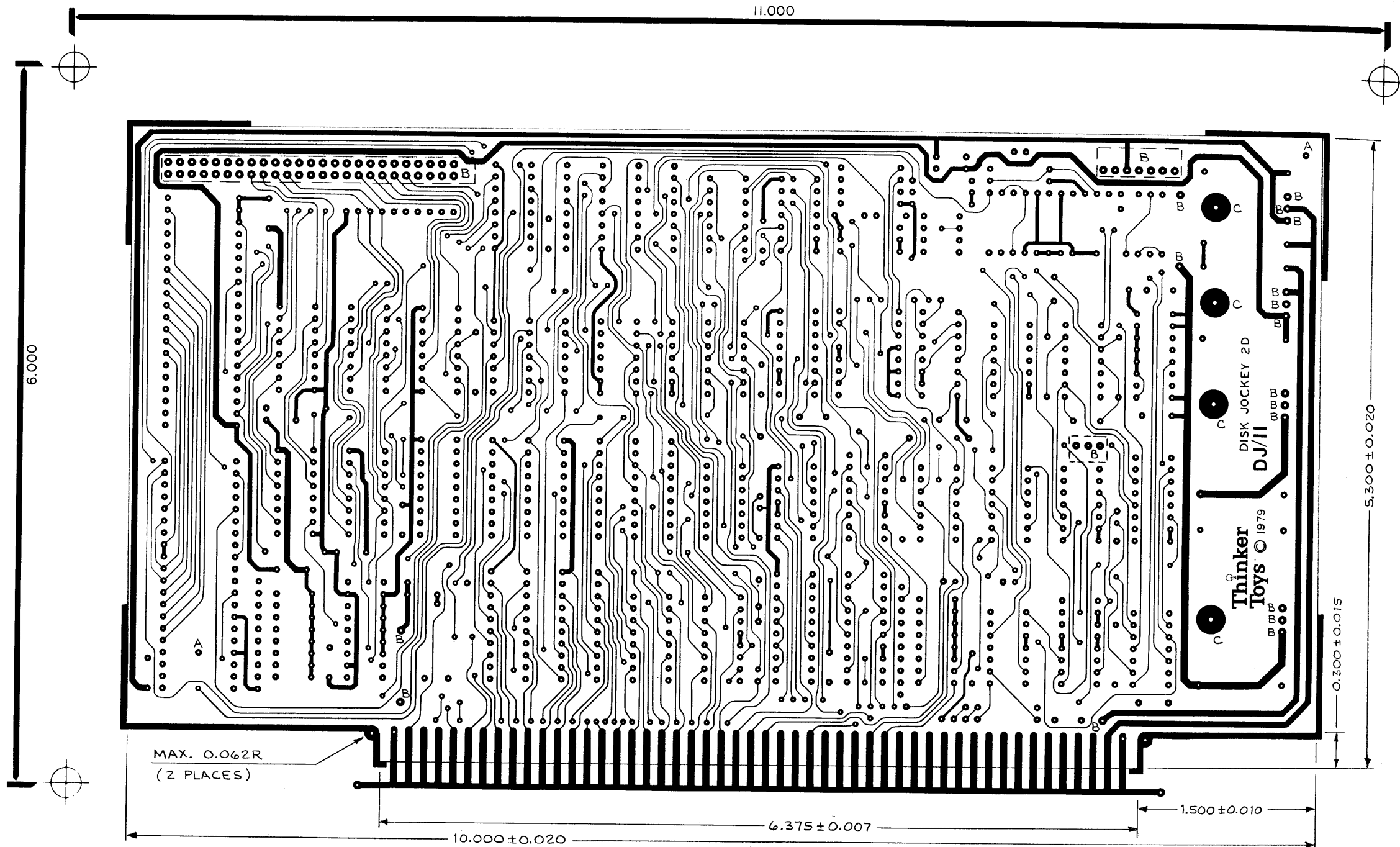
THINKER TOYS
DISC JOCKEY 2D
COMPONENT SIDE
P.C. DESIGN BY M&M DESIGNS 2-79

11.000

6.000



THINKER TOYS
DISK JOCKEY 2D
SOLDER SIDE
P.C. DESIGN BY M&M DESIGNS 2-79



- NOTES:
1. MAT'L = 1/16" G10 FR4 1 OZ CU. 2 SIDES
 2. FINISH: CIRCUIT = TIN/LEAD ELECTRO-PLATE
FINGERS = GOLD OVER NICKEL
 3. HOLES CODED "A" ARE TOOLING HOLES
 4. CHAMFER FINGERS 0.015 X 45°
 5. BREAK ALL SHARP CORNERS
 6. APPLY SOLDER MASK TO BOTH SIDES OF BOARD
 7. APPLY COMPONENT SILKSCREEN TO COMPONENT SIDE AFTER SOLDER MASK.
USE WHITE EPOXY PAINT.

HOLE CHART		
CODE	SIZE	QTY.
UNMK'D	0.031	A/R
A	A/R	2
B	0.040	77
C	0.143	4

HOLE SIZE GIVEN TO BE ±0.003 AFTER PLATE-THRU

THINKER TOYS
DISK JOCKEY 2D
FAB. DWG.
P.C. DESIGN BY M&M DESIGNS 2-79