

**FONTWARE**

**Ventura Publisher**

**MONITERM**

---

# **FONTWARE**

**for Ventura Publisher**

**Moniterm Corporation**  
5740 Green Circle Drive  
Minnetonka, Minnesota 55343  
(612) 935-4151

**MONITERM**

---

Information in this document is subject to change without notice and does not represent a commitment on the part of Bitstream Inc. The software described in this document is furnished under a license agreement or nondisclosure agreement. The software may be used or copied only in accordance with the terms of the agreement.

© 1987 Bitstream Inc. All rights reserved. Bitstream is a registered trademark of Bitstream Inc. Charter and Fontware are trademarks of Bitstream Inc.

Above and Intel are registered trademarks of Intel Corporation. Apple, LaserWriter and LaserWriter Plus are registered trademarks of Apple Computer, Inc. AST Turbo-Laser is a trademark of AST Research Inc. COMPAQ is a registered trademark of Compaq Computer Corporation. Epson and Epson Grafrax are registered trademarks of Seiko Epson Corporation. FX-80 is a trademark of Epson America Inc. Hercules is a trademark of Hercules Computer Technology. Hewlett-Packard and HP are registered trademarks of Hewlett-Packard Corporation. LaserJet, LaserJet Plus, and Series II are trademarks of Hewlett-Packard Corporation. IBM and IBM AT are registered trademarks of International Business Machines Corporation. CGA, EGA, and VGA are trademarks of International Business Machines Corporation. Moniterm Viking is a registered trademark of Moniterm Corporation. MS-DOS is a registered trademark of Microsoft Corporation. Moniterm Viking is a registered trademark of Moniterm Corporation. PostScript is a registered trademark of Adobe Systems Incorporated. Sigma Designs Laserview is a trademark of Sigma Designs, Inc. Tall Tree J Laser is a trademark of Tall Tree Systems. Toshiba is a registered trademark of Toshiba Corporation. Technology Incorporated. Xerox is a registered trademark of Xerox Corporation. Xerox 4020, 6065 are trademarks of Xerox Corporation.

Broadway, Century Schoolbook, Cloister Black, and Cooper Black are registered trademarks of Kingsley-ATF Type Corporation. Futura is a registered trademark of Fundicion Tipografica Neufville SA. ITC Garamond, ITC Korinna, ITC Galliard, ITC Avant Garde Gothic, and ITC Souvenir are registered trademarks of International Typeface Corporation.

# Table of Contents

<b>Welcome to Fontware for Ventura Publisher</b> . . . . .	1
What's in this Kit . . . . .	2
What You Need To Use Fontware . . . . .	3
Getting the Best Performance . . . . .	3
How To Use this Guide . . . . .	4
Before You Start . . . . .	5
<b>Getting Started</b> . . . . .	7
Setting Up . . . . .	8
Adding Fontware Typefaces . . . . .	12
Starting a Kit That's Already Set Up . . . . .	13
Getting Help . . . . .	14
Changing the Fontware Control Panel . . . . .	14
Exiting the Kit . . . . .	14
<b>Deciding Which Fonts To Make</b> . . . . .	15
What Is a Font? . . . . .	16
Four Elements that Define a Fontware Font . . . . .	16

<b>Making Fonts</b> . . . . .	<b>21</b>
Making Printer Fonts for the HP LaserJet . . . . .	22
Making Display Fonts . . . . .	24
Making Printer Fonts for PostScript Printers . . . . .	26
Making Matching Printer and Display Fonts . . . . .	28
Making 'Zoomed' Fonts for the Display . . . . .	30
<b>I've Made My Fonts. What's Next?</b> . . . . .	<b>31</b>
Using Display Fonts . . . . .	32
Mergin Printer Width Tables . . . . .	33
Storing Fonts on Diskettes . . . . .	40
Removing Fontware Typefaces . . . . .	40
<b>Troubleshooting</b> . . . . .	<b>41</b>
<b>Character Sets and the Character Key</b> . . . . .	<b>A-1</b>
<b>Typeface Key</b> . . . . .	<b>B-1</b>
<b>Device Key</b> . . . . .	<b>C-1</b>
<b>Fontware Messages</b> . . . . .	<b>D-1</b>

---

# Welcome to Fontware for Ventura Publisher

The Bitstream Fontware Installation Kit lets you create high quality matching display and printer fonts to use with the Ventura Publisher professional layout system. You can generate fonts in the styles and sizes you need with the installation kit and typefaces from the Fontware Library. Once they're made, you can begin using the fonts immediately.

'Immediately' means that the Fontware Installation Kit installs your fonts automatically in either the Ventura or PostScript directory and creates a width table that you can merge in Ventura Publisher with a width table you currently use. Once you merge the width table, the new fonts are ready to use.

---

## What's in this Kit

In addition to this guide your Fontware Installation Kit includes

- Two 5.25 inch disks in MS-DOS- format, containing the program for creating fonts from Fontware typefaces and making those fonts available to your printer and display. The program helps you choose the exact fonts you want for a specific display or printer.
- A *Fontware Impressions* brochure, presenting the current library of available typefaces. The brochure provides suggestions for using typefaces.
- An order form for Fontware typeface packages.

Fontware typefaces are available separately in packages of at least one typeface. Refer to the *Fontware Impressions* brochure for information about the typefaces currently available in the Fontware Library.

---

## What You Need To Use Fontware

You need the following items to make and install Fontware fonts:

- One or more Fontware typefaces. Each Fontware typeface package, available separately, contains the source designs for at least one typeface – often a family of typefaces in four styles.
- An IBM, PC, AT, PS/2 or 100% compatible with at least 512K bytes of memory, a hard (fixed) disk drive with approximately 900K bytes to store the Fontware Installation Kit, a high-density or double-density disk drive, and a monitor. You should also have 500K bytes free for font storage.
- MS-DOS or PC-DOS (version 3.1 or later) installed and running on the hard disk.
- Ventura Publisher (version 1.1 or later) installed on the hard disk.

---

## Getting the Best Performance

You can optimize the performance of the installation kit by

- Installing a math coprocessor, a computer chip available from manufacturers such as IBM and Intel.
- Increasing the conventional memory available on your system to 640K bytes using, for example, Intel's Above-Board/AT.



---

## How To Use this Guide

If you are new to Fontware and impatient to begin, read *Getting Started* which tells you how to install the Fontware Installation Kit on your hard disk. Then follow the instructions that appear on your display. If you need help, refer to **Chapter 3, Making Fonts**, and to the Quick Start Card.

If you want to learn more about Fontware fonts, read *Deciding Which Fonts To Make*. Then follow the instructions in *Getting Started* and *Making Fonts*.

Once you have made Fontware fonts and begin using them with Ventura Publisher, use the rest of this guide as a reference for font questions.

If you have questions about using type in your documents, refer to the *Fontware Impressions* brochure to get an idea of the mood or style created by different typefaces.

---

## Before You Start

The instructions in this guide assume that you are familiar with basic procedures in the DOS operating environment. If you have questions about DOS commands or the operation of your computer, refer to your system's manual.

Be sure that you know how to select fonts within Ventura Publisher. If you have questions, consult the *Ventura Publisher Reference Guide*.

Take time to go through the following steps before using the Fontware Installation Kit.

- 1. Use the COPY command at the DOS prompt to make backup copies of your installation kit. Be sure to copy all sub-directories and their contents. Your license agreement entitles you to make one backup copy of each disk included in this package. After you set up the Fontware Installation Kit on your hard disk, store all of your Fontware disks in a safe place.**



Chapter 1



---

## **Getting Started**

This chapter explains

- Setting up
- Adding Fontware typefaces
- Starting a kit that's already set up
- Getting help
- Changing the Fontware Control Panel
- Exiting the kit

---

## Setting Up

Before you set up the Fontware Installation Kit on your system

- Make sure that Ventura Publisher is set up on your hard disk.
- If you have a Read Me First insert in your Fontware Installation Kit package, follow its instructions.
- If you are currently working in Ventura Publisher, return to the DOS prompt by choosing the *Quit* option.

**1. With the PC turned on, insert Disk 1 of the Fontware Installation Kit into Drive A. Close the lever on the drive.**

**2. Type *a:fontware* and press <Enter>.**

- The copyright notice and Bitstream Fontware banner appear on your display.
- The program asks whether to show menus in more than two colors. Type Y if you have a color monitor. Type N if you have a monochrome monitor.

- The Fontware Main Menu, shown in Figure 1-1 appears on your display.

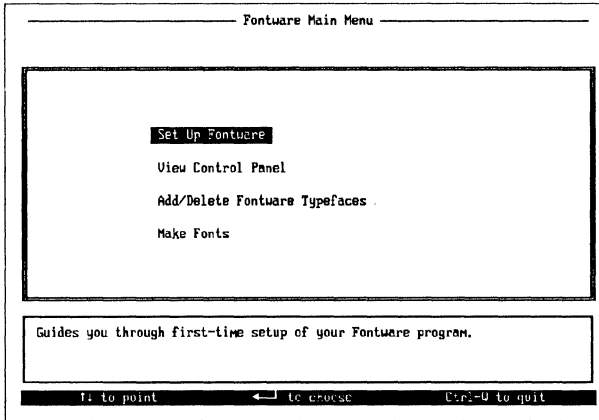


Figure 1-1 Fontware Main Menu during setup

**3. Press <Enter> to choose the Set Up Fontware option from the main menu.**

You see the Fontware Control Panel.

The message window prompts you for the names of directories needed by Fontware, as well as for information about your display and printer.

If you need to, you can change the information in the control panel any time you use the Fontware Installation Kit.

**4. Enter the full pathnames of the directories for:**

- The Fontware Installation Kit and Fontware typefaces.
- Ventura Publisher, which must already exist on your system.
- The installation kit uses to the Ventura directory to store fonts for all devices other than PostScript printers. The kit

stores PostScript fonts in the \PSFONTS directory, which you create.

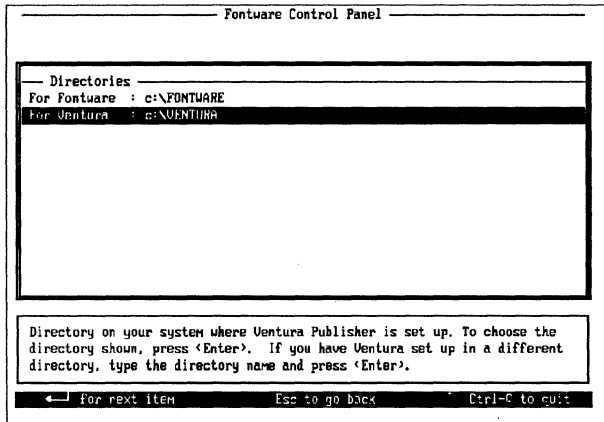
- Press <Enter> after each directory name.

**5. Type Y to install the Fontware Installation Kit.**

The kit begins copying program information into your Fontware directory. When the kit prompts you, insert disk 2 of the installation kit.

When the kit finishes copying, go on to step 6.

Figure 1-2 shows an example of a control panel during setup.



1-2 Sample Fontware Control Panel during setup

**6. Point to the display graphics adaptor for your display fonts and press <Enter>.**

We use the term 'display' to mean your screen or monitor.

**7. Point to a character set for the display and press <Enter>.**

The VP International character set is standard for Ventura. If you're not sure which character set you need, choose VP International.

The VP US character set has fewer characters than VP International. Still, it contains the upper- and lowercase alphabet used in English, plus basic punctuation. It is a good choice if you need large characters to use in headlines.

The PostScript Outline character set is for PostScript printers only. *Do not choose it for your display.*

See Appendix A for lists of the characters found in each set.

**8. Point to the printer for your printer fonts and press <Enter> .**

**9. Point to a character set for the printer and press <Enter> .**

The VP International and VP US character sets are described in step 7. For systems with printers *other than* PostScript or PostScript-compatible, we recommend that you choose the same character set for your printer as you chose for your screen.

*For PostScript printers only*, choose the PostScript Outline character set. This character set is required by Ventura Publisher using PostScript and PostScript-compatible printers.

Your display should resemble the one in Figure 1-3.

```

----- Fontware Control Panel -----
|
|  --- Directories ---
|  For Fontware  : c:\FONTWARE
|  For Ventura   : c:\VENTURA
|
|  --- Display ---
|  Model        : Hercules for Monochrome
|  Character Set : VP International
|
|  --- Printer ---
|  Model        : Hewlett Packard Series II
|  Character Set : VP International
|
|  Your Control Panel is now complete.
|  To accept these choices, press <F10>. To change any entry, press <Esc>.
|
|  F10 to accept      Esc to go back      Ctrl-Q to quit
  
```

1-3 Sample Fontware Control Panel after setup



10. If you are satisfied with your choices, press <F10>. If you want to go back and change an entry, press <Esc>.

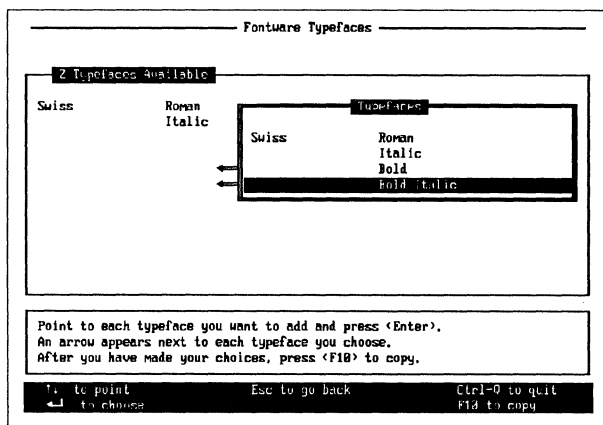
Once the control panel is complete, the installation kit takes you to the Fontware Typefaces menu. (If this is not a first-time setup, Fontware typefaces may already exist in your Fontware directory. In this case, the installation kit takes you to the Fontware Make Fonts menu.)

## Adding Fontware Typefaces

To make fonts, you need to add at least one Fontware typeface to your hard disk.

1. Press <F3> in the Fontware Typefaces menu. (If you don't see the typeface menu currently on your display, choose *Add/Delete Fontware Typefaces* from the Fontware Main Menu.)

2. Insert Disk 1 of a Fontware typeface package into Drive A and press <Enter>. A pop-up menu of the typefaces, similar to the one in Figure 1-4, appears on your display.



1-4 Sample Fontware typeface pop-up menu

3. Point to a typeface you want and press <Enter>. An arrow appears to the left of the typeface.

4. Repeat step 3 until you have chosen the typefaces you need.
5. Press <F10>. The kit begins copying the typefaces to your hard disk.
6. If the kit prompts you, insert Disk 2 of the typeface package into Drive A and press <Enter>.

---

## Starting a Kit That's Already Set Up

If the Fontware Installation Kit is set up already on your hard disk and you are not in a Fontware menu, start the kit by doing the following:

1. If you are working in Ventura Publisher, return to the DOS prompt by choosing the *Quit* option.
2. Change to the Fontware directory. If you have the Fontware directory on your system path, skip this step.
3. Type fontware and press <Enter>.

Starting the Fontware Installation Kit takes you to the Fontware Main Menu. From there you can choose

- *View Control Panel*, which lists basic information that Fontware needs to make your fonts. You can change any of the settings, except the Fontware directory.
- *Add/Delete Fontware Typefaces*, which lets you add typefaces to your Fontware directory and delete them when you're finished.
- *Make Fonts*, which lets you make fonts from the typefaces you have in your Fontware directory.

---

## Getting Help

The message window in the lower half of each menu tells you about each option and suggests ways to proceed. If you have questions, refer back to this guide, or to the Fontware Quick Start Card. For a list of special keys and their functions, press the <F1> Help key in the Fontware Make Fonts menu described in Chapter 3.

---

## Changing the Fontware Control Panel

You can check the control panel whenever you use the installation kit. There are several reasons you might change this information. For example, perhaps you added a new printer, or you want to use a different character set.

To change the Fontware Control Panel:

1. Point to *View Control Panel* in the main menu and press <Enter>.
2. Follow the instructions in the message window near the bottom of your display.

---

## Exiting the Kit

To quit, or exit, the installation kit press the two keys <Ctrl> and Q at the same time. The kit returns you to the DOS prompt without making fonts.

If you need to, you can stop the Fontware Installation Kit while it is generating and installing fonts. Press the two keys <Ctrl> and C at the same time.

## Chapter 2



---

## Deciding Which Fonts To Make

Before making fonts, you can save time and disk space by planning which fonts to make.

This chapter discusses

- What is a font?
- Four elements that define a font
- Things to consider when you make fonts

---

## What Is a Font?

A Fontware font is a set of characters for a specific model of printer or display device that you make using the installation kit and a Fontware typeface. Each font you make has a typeface design, such as Century Schoolbook Bold, and a set of characters, such as VP International.

Fonts exist as files on your system. The installation kit makes sure that the font files you make can be found by Ventura Publisher's device drivers (software that applications use to show type on your printer and display).

---

## Four Elements that Define a Fontware Font

To decide which fonts to make, consider the following questions:

- Which printer and display device will I be using?
- Which set of characters do I need?
- Which typefaces do I need?
- Which type sizes do I need?

The answers to these questions provide most of the information you need to make fonts. (There are a few other things to consider, too, which we cover in the next section.)

### Device

You should know the model name of the printer for which you are making fonts. The Fontware Control Panel lists the devices supported by the installation kit. If your printer uses both landscape and portrait fonts, the installation kit creates both types of fonts.

The actual devices don't have to be connected to your system when you run the Fontware Installation Kit. However, once you

have made the fonts, connect the printer and display to use the fonts.

Ventura Publisher device drivers make sure that fonts are printed and displayed correctly on each device. Refer to Appendix C for a list of supported devices.

Note: *The name of the display device is not necessarily the same as the name on your monitor. If you are not sure which display device you have, check your hardware documentation or ask the person who installed Ventura Publisher on your system.*

## Character Set

A character set, sometimes called a *layout* or a *symbol set*, is an organized collection of symbols.

The Fontware Installation Kit offers the following pre-defined character sets for both your display and your printer.

- VP US character set (116 characters)
- VP International character set (190 characters)
- PostScript Outline character set (186 characters)

You choose character sets for your devices in the Fontware Control Panel.

Lists of the printable characters found in each set appear in Appendix A at the end of this guide. (Five characters in each set are Ventura Publisher control characters, which are not printable.) Ventura Publisher provides instructions for typing characters that do not appear on your keyboard.

Which character set should you choose? For systems with PostScript printers, choose the PostScript Outline character set for the printer and the VP International character set for the display. For systems with non-PostScript printers, choose either the VP International or the VP US character set for both the printer and the display. Because it has fewer characters, we recommend the VP US character set for large headline fonts, which require more storage space than smaller text fonts.

## Typeface

You need at least one Fontware typeface. Each Fontware typeface package you buy usually contains several typefaces, often a family of typefaces. Bitstream Charter is an example of a typeface family. A family usually includes four related styles. Charter, for example, includes Roman, Italic, Black and Black Italic styles based on the Charter typeface design.

You might decide to use one, several, or all typeface styles from a package. Maybe you'd like to use typefaces from several packages. It's up to you. Refer to the *Fontware Impressions* brochure for samples of the typefaces currently available for Fontware for Ventura Publisher.

## Sizes

Most of the Fontware typefaces are *proportional*: the character widths vary from one character to another. Some Fontware typefaces, such as Courier, are *monospace*: the character widths are all the same.

You request type sizes in the Fontware Installation Kit in units of *points*. One point is equal to about 1/72 inch. The text you are reading is 10 points. If you need a 10 pitch monospace font (10 characters to the inch), request it as 12 points. If you need a 12 pitch monospace font (12 characters to the inch), request it as 10 points.

The smallest character you can make with the Fontware Installation Kit is about 6 points. The largest character you can make

depends on the device. For a LaserJet Plus the largest character is about 36 points. For the LaserJet series II the largest character is about 72 points. For a dot matrix printer the largest character is 99 points. For displays, the largest character is 36 points, though Ventura Publisher can double a display character's size up to 72 points. PostScript-compatible printers have no size limit. Check your printer's manual for any other size limitations.

For all devices, except PostScript printers, the Fontware Make Fonts menu in the installation kit lets you request point sizes using whole decimal numbers. For example, 10, 16, and 20 points are all valid type sizes.

You do not enter sizes for PostScript fonts. Instead, you request sizes when you use Ventura Publisher. Your printer then scales the fonts to size during printing.

### **Zoom Factors for Displays**

Ventura Publisher can display documents at their actual size and at reduced and enlarged sizes. The amount of reduction or enlargement, sometimes called a zoom factor, is usually expressed in percentages – for example, 50% or 200% of the actual size. You can make display fonts for each zoom factor.

For instance, if the actual size of the text in your document is 12 point, you might also make 6 point (50% of actual size) and 24 point (200%) for your display device. Once you have made the appropriate sizes, Ventura Publisher selects the right one for display. Of course, you only need to make the actual size for your printer, 12 point.

If your disk space allows, we suggest that you make display fonts in the following sizes for the normal style of any typeface: 6, 7, 8, 9, 10, 11, 12, 14, 16, 18, 20, 24, 28, and 36 points. These sizes cover most of the zoom factors.

For ideas about using type sizes, see the *Fontware Impressions* brochure.



Before making your fonts there are a few other things you should keep in mind.

### **How much disk space do you have for storing fonts?**

To give you an idea of how much storage you need ... eight font files of four sizes – 6, 8, 10, and 12 point – in portrait and landscape of Swiss Roman in the VP US character set for the HP LaserJet Plus printer take about 86K bytes. The matching fonts for a Hercules monochrome display take about 6K.

If you plan to use several typefaces, we suggest that you do *not* create bold or bold italic zoom fonts for your display. This saves disk space and helps in the loading time of Ventura Publisher. Ventura creates bold versions of fonts if the true bold font is not available.

*Hint:* To find out how much free storage space you have, use the `dir` or `chkdsk` command in DOS. The Fontware Installation Kit lets you know if you have enough disk space before it makes your fonts.

### **How long will it take to make the fonts?**

After you request fonts, the installation kit makes those fonts and updates files on your system so that Ventura Publisher can use the fonts. To make the four fonts described above for the LaserJet Plus and a screen display takes about 18 minutes on an IBM PC AT with 512K memory. If your system has 640K memory and a math coprocessor, the same job takes about 7 minutes.

### **Are you really sure which fonts you need?**

If not, experiment. Make a couple of different fonts and try them out within a document. If they look right, make other sizes and styles you need. In other words, feel free to sample fonts, but make just a few at a time until you build the complete set of fonts you need.

## Chapter 3




---

## Making Fonts


This chapter explains

Making printer fonts for the HP LaserJet printer family or dot matrix printers

- Making display fonts
- Making printer fonts for PostScript printers
- Making matching display and printer fonts
- Making 'zoomed' fonts for the display



If the Fontware Installation Kit is not already set up in a directory on your hard disk, please follow the instructions in Chapter 1, *Getting Started*. If you are not currently running the kit, follow the instructions for starting the kit in Chapter 1.



---

## Making Printer Fonts for the HP LaserJet Printer Family or Dot Matrix Printers

Make sure that the Fontware Control Panel lists your printer and choice of character sets by choosing *View Control Panel* from the main menu. Add the Fontware typeface you need by choosing *Add/Delete Fontware Typefaces* from the main menu. When you're ready to make fonts, follow the instructions below.

1. Start from the Fontware Make Fonts menu for the printer. Get there by choosing *Make Fonts* from the main menu, or by pressing <F10> from either the Fontware Typefaces or Fontware Control Panel menu.

The make fonts menu lists the names of the Fontware typefaces on your hard disk.

2. Point to a typeface and press <Enter>.

The kit highlights a bar in the Point Size Selection menu next to the typeface. A cursor blinks at the beginning of the bar.

The message window tells you the name of the typeface style in Ventura Publisher. It also recommends a minimum point size and suggests a way to use the typeface in documents.

3. Type in the sizes of the fonts you need. You can use either the numbers at the top of the keyboard or the numeric keypad. Press the spacebar to separate each size. Figure 3-1 shows an example of point sizes. When you're satisfied with the sizes, press <Enter>.

Change your mind? Choose the typeface again, and edit the list of sizes. The <F1> Help key tells you which editing keys are active.

4 Typefaces Available		Printer	Point Size Selection
Swiss	Roman	6 7 8 9 10 11 12 14 16 18 20 22 24 36	
	Italic	6 7 8 9 10 11 12 14 16 18 20 22 24 36	
	Bold	10 12 14 16 24	
	Bold Italic	10 12	
Ventura Style : Bold Italic		Enter each size you want, followed by a	
Recommended Size: 6 and up		space. Enter only whole numbers.	
Recommended Use : Text		Example: 9 18 24	
← to accept sizes		Esc to go back	Ctrl-Q to quit
F1 help			F9 paste

3-1 Example of point sizes in the make fonts menu

4. (optional) Press <F6> for an estimate of the time needed to make all of the fonts you have requested so far. The kit also tells you if you have enough storage space.
5. (optional) Repeat steps 2 through 4, choosing a different Fontware typeface. To repeat the list of sizes you entered last, press <F9> Paste, after you choose a typeface.
6. When you're finished specifying all the fonts you need, press <F10>. The kit displays an estimate of the time needed to make the fonts. It also tells you if you have enough disk space. If you don't have enough space, go back to the make fonts menu and delete sizes from the fonts. Then Press <F10> again.
7. When you're ready, press Y. Fontware begins to generate your fonts.

## Making Display Fonts

Make sure that the Fontware Control Panel lists your display and choice of character sets by choosing *View Control Panel* from the main menu. Add the Fontware typefaces you need by choosing *Add/Delete Fontware Typefaces* from the main menu. When you're ready to make display fonts, follow the instructions below.

*Note: If you chose a display resolution in the Fontware Control Panel, you need to make Swiss and Dutch 10 point normal fonts for your display. If you don't have Swiss and Dutch typeface packages and you don't already have these Swiss and Dutch display fonts, change the display device in the Fontware Control Panel to a specific model.*

1. Start from the Fontware Make Fonts menu for the display. Get there by choosing Make Fonts from the main menu, or by pressing <F10> from either the Fontware Typefaces or Fontware Control Panel menu. If you selected a printer in the control panel, the make fonts menu for the printer appears on your screen. Press <F2>. The make fonts menu for your display appears on the screen.

The menu lists the names of the Fontware typefaces on your hard disk.

2. Point to a typeface and press <Enter>.

The kit highlights a bar in the Point Size Selection menu next to the typeface. A cursor blinks at the beginning of the bar.

3. Type in the sizes of the fonts you need. You can request any sizes between 6 and 39 points, the current upper limit for Ventura Publisher display fonts. You can use either the numbers at the top of the keyboard or the numeric keypad to type in the sizes.

Press the spacebar to separate each size. Figure 3-1 shows an example of point sizes. When you're satisfied with the sizes, press <Enter>.

If you change your mind, choose the typeface again, and edit the list of sizes. The <F1> Help key tells you which editing keys are active.

4. (optional) Press <F6> for an estimate of the time needed to make all of the fonts you have requested so far. The kit also tells you if you have enough storage space.

5. (optional) Repeat steps 2 through 4, choosing a different Fontware typeface. To repeat the list of sizes you entered last, press <F9> Paste, after you choose a typeface.

6. When you're finished specifying all the fonts you need, Press <F10>. The kit displays an estimate of the time needed to make the fonts. It also tells you if you have enough disk space. If you don't have enough space, go back to the make fonts menu and delete sizes from the fonts. Then press <F10 > again.

7. When you're ready, press Y. Fontware begins to generate your fonts.

---

## Making Printer Fonts for PostScript Printers

Make sure that the Fontware Control Panel lists your printer and choice of character sets by choosing *View Control Panel* from the main menu. Add the Fontware typefaces you need by choosing *Add/Delete Fontware Typefaces* from the main menu.

**Note:** *If you changed to a PostScript printer and you already have Fontware typefaces on your system, you need to add the typefaces again. The reason for this is that PostScript fonts require special files that the kit doesn't add to your hard disk unless necessary.*

When you are ready, continue with the instructions below.

1. Start from the Fontware Make Fonts menu for the printer. Get there by choosing Make Fonts from the main menu, or by pressing <F10> from either the Fontware Typefaces or Fontware Control Panel menu.

The make fonts menu lists the names of the Fontware typefaces on your hard disk.

2. Point to a typeface and press <Enter>.

The word **yes** appears next to the typeface, which indicates you have selected it. To de-select a typeface, point to it again and press <Enter>. Figure 3-2 shows an example of the font selection menu for a PostScript printer.

Typeface Available		Printer	Typeface Selected
Swiss	Roman	yes	
	Twelve	yes	
	Bold		
	Bold Italic		

Point to the typeface you want and press <Enter> to select fonts for your printer. Be sure to select display fonts if you need them. After you have made all your font selections, press <F10> to make fonts.

F1 Help   ← to choose   Esc to Main   Ctrl Q to quit  
 F2 view display   F6 time/space   F10 make fonts

3-2 Sample make fonts menu for a PostScript printer.

3. (optional) Press <F6> for an estimate of how long it will take to make all of the fonts you have requested so far. The kit also tells you if you have enough storage space.

4. Repeat steps 2 and 3 until you have selected all the typefaces you need.

5. When you're finished specifying all the fonts you need, press <F10>. The kit displays an estimate of the time needed to make the fonts. It also tells if you have enough disk space. If you don't have enough space, go back to the make fonts menu and delete fonts. Then press <F10> again.

6. When you're ready, press Y. Fontware begins to generate your fonts.



## Making Matching Printer and Display Fonts

There are two procedures for making matching fonts. The one you use depends on your printer.

Make sure that the Fontware Control Panel is correct. Then add any typefaces you need. When you are ready, follow the instructions below.

### *PROCEDURE 1: MATCHING FONTS FOR DISPLAYS AND THE HP LASERJET PRINTER FAMILY OR DOT MATRIX PRINTERS*

1. Start from the Fontware Make Fonts menu for the printer. Get there by choosing Make Fonts from the main menu, or by pressing <F10> from either the Fontware Typefaces or Fontware Control Panel menu.
2. Point to a typeface and press <Enter>.
3. Type in one or more point sizes and press <Enter>. To edit the sizes, choose the typeface again.
4. Press <F4> to copy your font requests to the display fonts menu.
5. (optional) Repeat steps 2 through 4, choosing a different Fontware typeface. To repeat the list of sizes you entered last, press <F9> Paste, after you choose a typeface.
6. (optional) Press <F6> for an estimate of the time needed to make all of the fonts you have requested so far. The kit also tells you if you have enough storage space.
7. When you're finished specifying all the fonts you need, press <F10>. If you don't have enough space, go back to the make fonts menu and delete sizes from both the printer and display fonts. Then press <F10> again.
8. When you're ready, press Y. Fontware begins to generate your fonts.

**PROCEDURE 2: MATCHING FONTS FOR DISPLAYS AND  
POSTSCRIPT PRINTERS**

Making matching fonts for PostScript devices is much the same as for other devices. However, you do not specify sizes for PostScript fonts.

1. Start from the Fontware Make Fonts menu for the printer.
2. Point to a typeface you want for PostScript fonts and press <Enter>.

The word *yes* appears next to the typeface, which indicates you have selected it.

3. Repeat step 2 until you have selected all the typefaces you need.
4. Press <F2> to go to the make fonts menu for your display.

**5. Point to a typeface you have chosen for your  
PostScript printer and press <Enter> .**

6. Type in one or more point sizes for the display and press <Enter> . To edit the sizes, choose the typeface again.
7. (optional) Press <F6> for an estimate of how long it will take to make all of the fonts you have requested so far. The kit also tells you if you have enough storage space.
8. (optional) Repeat steps 5 through 7, choosing a different Fontware typeface.
9. When you're finished specifying all the fonts you need, press <F10> . If you don't have enough space, go back to the make fonts menu and delete fonts. Then press <F10> again.
10. When you're ready, press Y. Fontware begins to generate your fonts.

---

## Making 'Zoomed' Fonts for the Display

To make display fonts that match printer fonts at enlarged and reduced views:

1. Follow the instructions above for making matching printer and display fonts.
2. Before generating the fonts, go to the make fonts menu for the display.
3. Choose each typeface again, and enter the additional sizes you want. Figure the additional sizes based on the percentage of enlargement and reduction. For example, if the actual size of a printer font is 12 points, then you might make three fonts for the display: 12 point (100% of the actual size), 6 point (50%), and 24 point (200%).
4. When you're ready, press <F10> and follow the instructions on your display.

## Chapter 4





---

## I've Made My Fonts. What's Next?

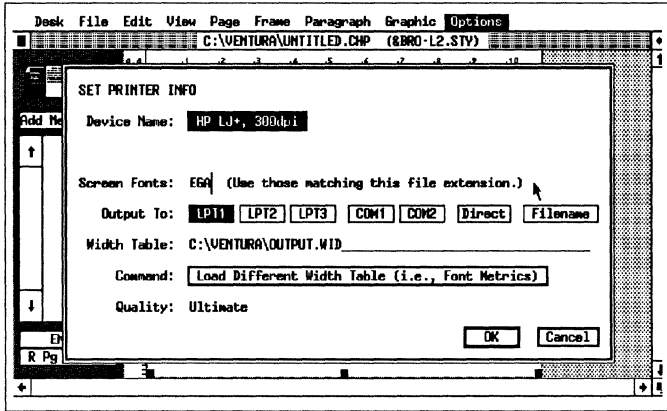
The Fontware Installation Kit has made your fonts and a width table (.wid) file, containing width and height information for each character in each printer font you made. Now, you can use Ventura Publisher to select new display fonts and to merge the width table with a width in your Ventura directory.

This chapter discusses

- Using display fonts
  - Merging printer width tables
  - Identifying font files
  - Storing fonts on diskettes
  - Removing Fontware typefaces
- 
- 

## Using Display Fonts

The display fonts are ready to use. Choose *Set Printer Info...* from the option menu in Ventura Publisher. Make sure that the three letter file extension on the Screen Fonts line is VGA. If not, type in the correct extension. Figure 4-1 shows the Set Printer Info Dialog Box.



4-1 Set Printer Info dialog box in Ventura

The display fonts created by the Installation kit have the file name extensions listed below.

<i>EXTENSION</i>	<i>INDICATES A DISPLAY FONT FOR</i>
091	<i>High-resolution displays at 91 x 91 dots per inch</i>

---

## Mergin Printer Width Tables

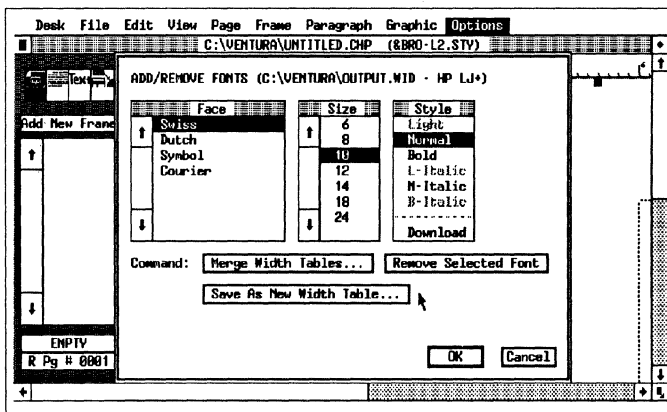
Every time the installation kit makes printer fonts, it also makes a Ventura-compatible *width table*. The width table contains width, height, and style information for each character in each font that you made. Ventura uses this information to position the corresponding characters on the display. As a result, the line endings, paragraphs, and pages you see on the display match what you get on the printed page.

Did you make Swiss and Dutch normal fonts (in 10 point for non-PostScript printers) during your font-making session? If so, you can use the Fontware-generated width table as is. Probably, however, the fonts you made do not include the basic Swiss and Dutch fonts. In that case, you need to merge the width table with an existing width table containing the Swiss (Helvetica) and Dutch (Times) fonts.

To merge the new width table with an existing width table for your printer

1. Enter Ventura Publisher.
2. Choose *Load New Width Table* in the Set Printer Info option and load a width table you currently use.

3. Choose *Add/Remove Fonts...* from the options menu. Figure 4-2 illustrates the Add/Remove Fonts Dialog Box.

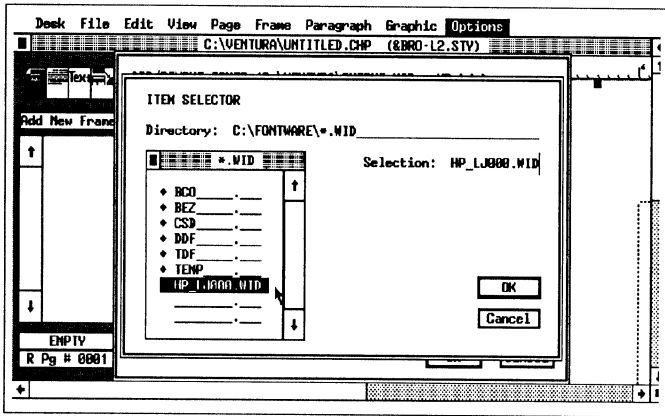


4-2 Add/Remove fonts dialog box in Ventura.

4. Choose *Save as New Width Table...* to save the width table under a new name. This step helps make sure that you don't accidentally modify an existing width table.

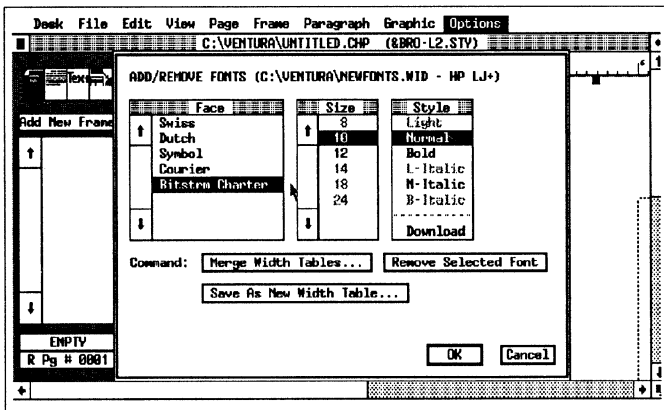
If your new fonts include the basic Swiss and Dutch 10 point fonts, you can remove the present Swiss and Dutch fonts from the current width table, before going on to step 5.

5. Choose *Merge Width Tables...* and change to the Fontware directory. Figure 4-3 shows the width table selector box in Ventura.



4-3 The width table selector box in Ventura

6. Choose the .wid table generated with the new Fontware fonts for your printer. (.wid file names contain the printer name and four-digit number. The highest number indicates the most recent width table. See figure 4-3.) Ventura adds the width information to the current width table. The combined set of faces, sizes, and styles appear immediately in the Add/Remove Fonts Dialog Box. See figure 4-4.



4-4 Add/Remove Fonts dialog box after merging width table



oose any face, size, or style that you don't want (except the fonts listed in step 4). Then choose Remove Select Font.

8. When you are ready, choose OK to save the new width table.

Now you are ready to print and display your Fontware fonts.

### Identifying Font Files

If you want to copy or delete fonts from your hard disk, you'll need to recognize and interpret the font names.

#### *FONT DIRECTORY*

The Fontware Installation Kit stores PostScript fonts in the \PSFONTS directory. It stores all other fonts in the Ventura directory you selected during setup.

**FONT NAMES**

When it assigns names to the fonts it generates, the installation kit uses either four or eight character positions, plus a three-character extension. For example, the following are valid Fontware font names:

cquq.pfa

ak100lhp.sfp

ag080uhp.b30

*Ventura's device drivers locate each font you request by interpreting information encoded in the font file.*

The printer fonts created by the installation kit have the file name extensions listed below. (For the list of filename extensions for display fonts, refer to the section *Using Display Fonts* above.)

<i>Extension</i>	<i>Indicates a printer font for</i>
b30	<i>JLaser, Cordata</i>
eps	<i>Epson MX80 and FX 80, IBM Graphics and Proprinter, and Xerox 4020</i>
pfa	<i>Apple LaserWriter and LaserWriter Plus, PostScript compatibles</i>
sfl	<i>HP LaserJet Plus and LaserJet series II (landscape orientation)</i>
sfp	<i>HP LaserJet Plus and LaserJet series II (portrait orientation)</i>
w30	<i>AST TurboLaser</i>

NON-POSTSCRIPT FONTS

Font file names for displays and non-PostScript printers have the format described below.

*ttpppcdr.xxx*

where

*tt* is the typeface identifier

*ppp* is a three-digit point size description

*c* is a character set identifier

*d* is a device class identifier

*r* is the character 'p', a reserved position

*xxx* is the filename extension (See above.)

For keys to the character set, typeface, and device identifiers, see the appendixes.

**POSTSCRIPT PRINTER FONTS**

PostScript font file names have the format described below.

*ttcd.pfa*

where

*tt* is the typeface identifier

*c* is a character set identifier

*d* is a device class identifier

For keys to the character set, typeface, and device identifiers, see the appendixes.

---

## Storing Fonts on Diskettes

If you don't need the fonts right away, you can copy them and the .wid file from the font directories on your hard disk to a diskette. Then delete the fonts from the hard disk to make room for other files.

If you back up a chapter or publication that uses Fontware fonts to a diskette, back up the fonts as well. Then, if you need to, you can delete the documents, related Ventura files, and the fonts from your system. Later you can restore everything to your system and print the publication again.

---

## Removing Fontware Typefaces

You can use the *Add/Delete Typefaces* option in Fontware to remove typefaces when you're done with them. If you want to remove the typefaces from your system and still see a list of your typefaces in the Fontware menus, do the following:

1. In DOS, change to the BCO subdirectory of your Fontware directory.
2. Delete files with the file name extension .bco
3. If you have a PostScript printer, change to the BEZ subdirectory of the Fontware directory and delete files with the file name extension .bez.

The next time you use the Fontware Installation Kit, you will see your typefaces listed as before in the Fontware Make Fonts menu. When you choose a typeface, the kit prompts you to go to Add/Delete Fontware Typefaces and add the typeface again to your Fontware directory. You should add all the typefaces you need before you begin entering point sizes.

## Chapter 5



---

## Troubleshooting

This chapter suggests ways to correct problems you might encounter working with fonts.

### Problem

The Fontware make fonts menu for the printer or display does not appear on my screen.

### What You Should Do

Choose *View Control Panel* from the Fontware Main Menu. The device probably is set to *none*. Change the device to the correct printer or display. Then return to the make fonts menu.



### Problem

The font menu in my application indicates more than one copy of the same font size.

### What You Should Do

The printer driver may not tell the difference between similar fonts that have different character sets. For example, 12 point Charter Black with the VP International character set and 12 point Charter Black with the VP US character set may both appear in the type menu under the same name. Use just one of the fonts, and delete the other.

### **Problem**

The message 'Not Enough Memory to Load All Fonts' appears on my display when I run Ventura Publisher.

### **What You Should Do**

You probably made display font larger than 36 points. Delete all fonts above 36 points, or simply ignore the message; Ventura disregards fonts that are too large and loads properly.

### **Problem**

The fonts I made don't appear in the list of available fonts in my application.

### **What You Should Do**

You need to merge the width table for your new fonts with a width table you select in the *Set Printer Info...* option in Ventura. Refer to Chapter 4 of this guide.

### **Problem**

A message from the printer appears indicating that the printer font limit has been reached.

### **What You Should Do**

This indicates a restriction imposed by your printer or printer driver. Consult the *Ventura Publisher Reference Guide* for more information about print handling.

### **Problem**

Characters above a certain point size appear clipped or oddly shaped.

### **What You Should Do**

Some devices limit the space that a given character can occupy. Fontware takes the limit into account when it creates the character image, and provides the best image possible in the allotted space.

**Problem**

Some italic characters appear clipped or squeezed on my display (or printer).

**What You Should Do**

Several devices don't allow characters to extend outside a predefined area. Therefore, some characters such as lower case italics that would naturally extend outside this boundary appear clipped or distorted. These characters can appear normal when printed.

**Problem**

My headline font won't print.

**What You Should Do**

The headline font file could be too large for your printer's memory to handle. If the character set you used was VP International, delete the font. Then change the printer character set in the Fontware Control Panel to the VP US character set and remake the font.





## Character Sets and the Character Set Key

The Fontware Installation Kit allows you to generate fonts containing the following character sets:

- Ventura Publisher (VP) International
- Ventura Publisher (VP) US
- PostScript

The tables on the following pages in this appendix list the characters found in each set along with their decimal ASCII values.

The character set key below presents the predefined Fontware character sets and the one-character codes that represent them in font file names. The character set code appears as the sixth character in a font file name: tpppꝑdo.xxx.

<b>Code</b>	<b>Character set</b>
i	VP International
u	VP US
p	PostScript

<b>Decimal</b>	<b>VP Inter- national</b>	<b>VP US</b>	<b>PostScript</b>
0-31	not used	not used	not used
32	Space	Space	Space
33	!	!	!
34	"	"	"
35	#	#	#
36	\$	\$	\$
37	%	%	%
38	&	&	&
39	,	,	,
40	(	(	(
41	)	)	)
42	*	*	*
43	+	+	+
44	,	,	,
45	-	-	-
46	.	.	.
47	/	/	/
48	0	0	0
49	1	1	1
50	2	2	2
51	3	3	3
52	4	4	4

<b>Decimal</b>	<b>VP Inter- national</b>	<b>VP US</b>	<b>PostScript</b>
53	5	5	5
54	6	6	6
55	7	7	7
56	8	8	8
57	9	9	9
58	:	:	:
59	;	;	;
60	<	<	<
61	=	=	=
62	>	>	>
63	?	?	?
64	@	@	@
65	A	A	A
66	B	B	B
67	C	C	C
68	D	D	D
69	E	E	E
70	F	F	F
71	G	G	G
72	H	H	H
73	I	I	I
74	J	J	J

Decimal	VP Inter- national	VP US	PostScript
75	K	K	K
76	L	L	L
77	M	M	M
78	N	N	N
79	O	O	O
80	P	P	P
81	Q	Q	Q
82	R	R	R
83	S	S	S
84	T	T	T
85	U	U	U
86	V	V	V
87	W	W	W
88	X	X	X
89	Y	Y	Y
90	Z	Z	Z
91	[	[	[
92	\	\	\
93	]	]	]
94	^	^	^
95	-	-	-
96	'	'	'

<b>Decimal</b>	<b>VP Inter- national</b>	<b>VP US</b>	<b>PostScript</b>
97	a	a	a
98	b	b	b
99	c	c	c
100	d	d	d
101	e	e	e
102	f	f	f
103	g	g	g
104	h	h	h
105	i	i	i
106	j	j	j
107	k	k	k
108	l	l	l
109	m	m	m
110	n	n	n
111	o	o	o
112	p	p	p
113	q	q	q
114	r	r	r
115	s	s	s
116	t	t	t
117	u	u	u
118	v	v	v

Decimal	VP International	VP US	PostScript
119	w	w	w
120	x	x	x
121	y	y	y
122	z	z	z
123	{	{	{
124			
125	}	}	}
126	~	~	~
127	not used	not used	not used
128	Ç	not used	Ç
129	ü	not used	ü
130	é	not used	é
131	â	not used	â
132	ä	not used	ä
133	à	not used	à
134	å	not used	å
135	ç	not used	ç
136	ê	not used	ê
137	ë	not used	ë
138	è	not used	è
139	ï	not used	ï
140	î	not used	î

Decimal	VP International	VP US	PostScript
141	ì	not used	ì
142	Ä	not used	Ä
143	Å	not used	Å
144	É	not used	É
145	æ	not used	æ
146	Æ	not used	Æ
147	ô	not used	ô
148	ö	not used	ö
149	ò	not used	ò
150	û	not used	û
151	ù	not used	ù
152	ÿ	not used	ÿ
153	Ö	not used	Ö
154	Ü	not used	Ü
155	¢	¢	¢
156	£	not used	£
157	¥	not used	¥
158	¤	not used	¤
159	f	not used	f
160	á	not used	á
161	í	not used	í
162	ó	not used	ó



Decimal	VP Inter-national	VP US	PostScript
185	§	§	§
186	‡	‡	‡
187	†	†	†
188	¶	¶	¶
189	©	©	©
190	®	®	®
191	™	™	™
192	”	”	”
193	...	...	...
194	‰	‰	‰
195	•	•	•
196	—	—	—
197	—	—	—
198	°	°	°
199	Á	not used	Á
200	Â	not used	Â
201	È	not used	È
202	Ê	not used	Ê
203	Ë	not used	Ë
204	Ì	not used	Ì
205	Í	not used	Í
206	Î	not used	Î

Decimal	VP International	VP US	PostScript
163	ú	not used	ú
164	ñ	not used	ñ
165	Ñ	not used	Ñ
166	ª	not used	ª
167	º	not used	º
168	¿	not used	¿
169	“	“	“
170	”	”	”
171	‹	not used	‹
172	›	not used	›
173	¡	not used	¡
174	«	not used	«
175	»	not used	»
176	ã	not used	ã
177	õ	not used	õ
178	Ø	not used	Ø
179	ø	not used	ø
180	œ	not used	œ
181	Œ	not used	Œ
182	À	not used	À
183	Ã	not used	Ã
184	Ö	not used	Ö

Decimal	VP International	VP US	PostScript
207	İ	not used	İ
208	Ò	not used	Ò
209	Ó	not used	Ó
210	Ô	not used	Ô
211	Š	not used	Š
212	š	not used	š
213	Û	not used	Û
214	Ú	not used	Ú
215	Û	not used	Û
216	Ÿ	not used	Ÿ
217	ß	not used	ß

## Typeface Key

The following list presents Fontware typefaces, styles, and the two-character codes that represent them in font file names. The typeface code appears as the first two characters in a font file name: `ttppcdr.xxx` (`ttcd.xxx` for PostScript fonts).

### Code Typeface

aa	Swiss Roman
ab	Swiss Italic
ac	Swiss Bold
ad	Swiss Bold Italic
ae	Century Schoolbook Roman
af	Century Schoolbook Italic
ag	Century Schoolbook Bold
ah	Century Schoolbook Bold Italic
ai	Dutch Roman
aj	Dutch Italic
ak	Dutch Bold
al	Dutch Bold Italic
am	Zapf Calligraphic Roman
an	Zapf Calligraphic Italic
ao	Zapf Calligraphic Bold
ap	Zapf Calligraphic Bold Italic
aq	Futura Light
ar	Futura Light Italic
as	Futura Condensed Medium
at	Futura Extra Black
au	Swiss Light
av	Swiss Light Italic
aw	Swiss Black
ax	Swiss Black Italic

### Code Typeface

ay	Swiss Condensed Roman
az	Swiss Condensed Italic
ba	Swiss Condensed Bold
bb	Swiss Condensed Black
bc	Futura Book
bd	Futura Book Italic
be	Futura Heavy
bf	Futura Heavy Italic
bg	Futura Medium
bh	Futura Medium Italic
bi	Futura Bold
bj	Futura Bold Italic
bk	Courier 10 Roman
bl	Courier 10 Italic
bm	Courier 10 Bold
bn	Courier 10 Bold Italic
bo	Letter Gothic 12 Roman
bp	Letter Gothic 12 Italic
bq	Letter Gothic 12 Bold
br	Letter Gothic 12 Bold Italic
bs	Prestige 12 Roman
bt	Prestige 12 Italic
bu	Prestige 12 Bold
bv	Prestige 12 Bold Italic

**Code Typeface**

bw ITC Avant Garde Gothic Book  
bx ITC Avant Garde Gothic Medium  
by ITC Avant Garde Gothic Demi  
bz ITC Avant Garde Gothic Bold  
  
ca Zapf Humanist Roman  
cb Zapf Humanist Italic  
cc Zapf Humanist Bold  
cd Zapf Humanist Bold Italic  
  
ce Bitstream Cooper Black  
cf University Roman  
cg Cloister Black  
ch Broadway Roman  
  
ci ITC Souvenir Light  
cj ITC Souvenir Light Italic  
ck ITC Souvenir Demi  
cl ITC Souvenir Demi Italic

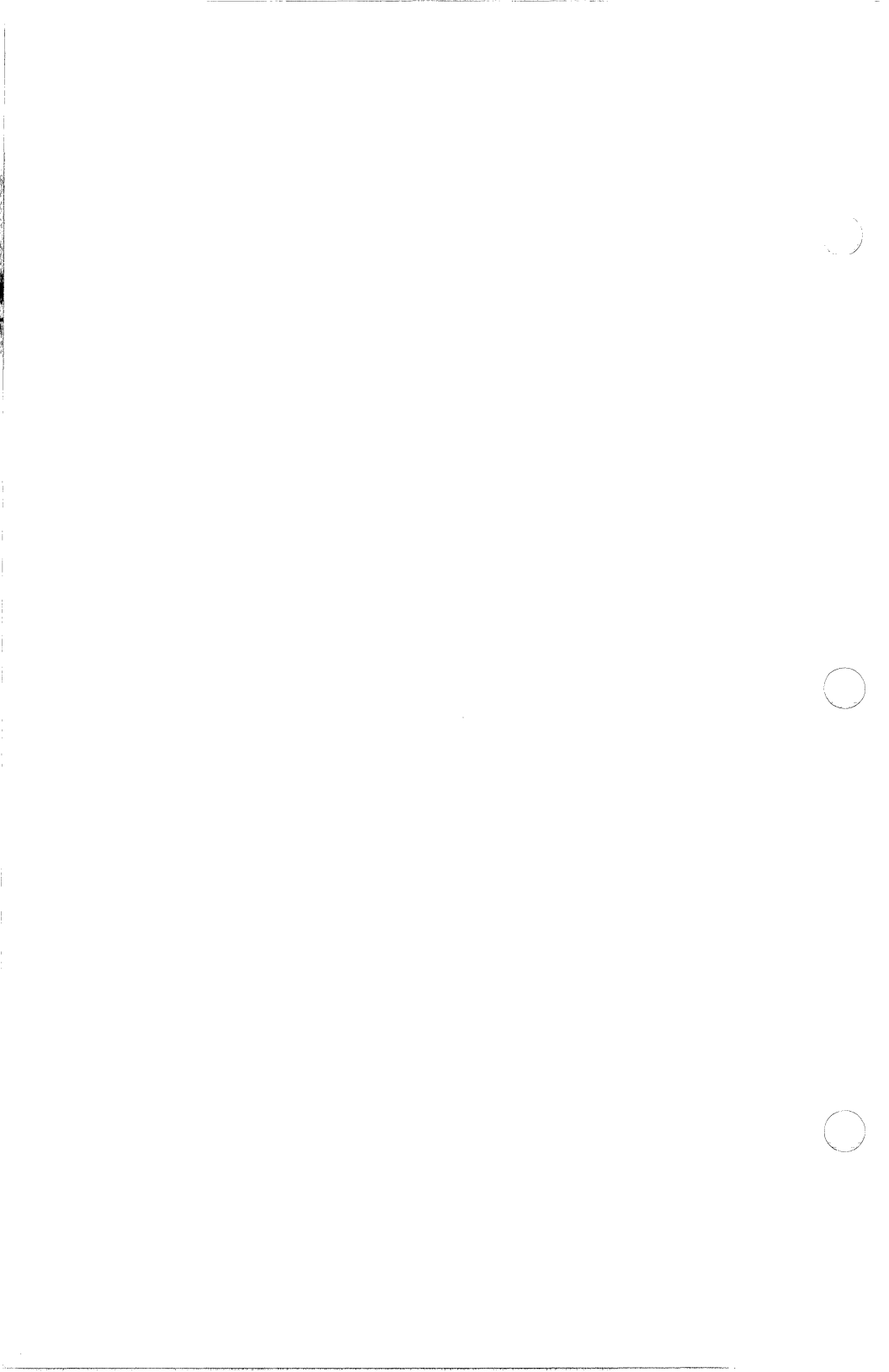
**Code Typeface**

cm ITC Korinna Regular  
cn ITC Korinna Kursiv Regular  
co ITC Korinna Extra Bold  
cp ITC Korinna Kursiv Extra Bold  
  
cq Bitstream Charter Roman  
cr Bitstream Charter Italic  
cs Bitstream Charter Black  
ct Bitstream Charter Black Italic  
  
cu ITC Galliard Roman  
cv ITC Galliard Italic  
cw ITC Galliard Bold  
cx ITC Galliard Bold Italic  
  
cy ITC Garamond Book  
cz ITC Garamond Book Italic  
da ITC Garamond Bold  
db ITC Garamond Bold Italic

## Device Key

Each single-character device code in a font file name represents a group of devices. The device code appears as the seventh character in a font file name: `ttpppcdr.xxx`. The resolution is the main characteristic in common among the devices in each group. Resolution is the number of dots the device prints or displays in a square inch. It is indicated by both the horizontal dots per inch (the *hdpi*) and vertical dots per inch (the *vdpi*).

Code	Resolution ( <i>hdpi, vdpi</i> )	Device
b	300, 300	Cordata LP300x printer Tall Tree J Laser™ printer controller
c	91, 48	Compaq® personal computer IBM CGA™ graphics adaptor
e	120, 144	Epson® MX-80™ or FX-80™ Grafrax™ printer IBM Graphics™ and Proprinter™ printer Xerox 4020™ Inkjet printer
h	300, 300	HP® LaserJet Plus™, HP LaserJet Series II™
q	300, 300	Apple LaserWriter® or Apple LaserWriter Plus® PostScript®-compatible printers
v	91, 91	High resolution displays (such as VGA)*
w	300, 300	AST TurborLaser™



## Fontware Installation Kit Messages

This appendix lists the messages that can appear on your display while you are running the installation kit.

Message	What It Means
Cannot change to Fontware Directory.	During setup. The kit is unable to change to the Fontware directory you typed. Check to make sure that you typed a valid directory name.
Cannot change to Fontware Drive.	During setup. The kit is unable to change to the drive you indicated for the Fontware directory. Check to make sure that you typed a valid drive letter before the directory name.
Check disk in Drive A: and close drive lever.	<p>There is no disk in Drive A. If you are installing the kit, put the appropriate disk into the drive and close the drive lever. If you are adding typefaces, put a typeface disk into the drive and close the lever.</p> <p>A disk is in Drive A but the drive lever has not been closed. Be sure to close the drive lever.</p>
Check disk. Files may be corrupted.	The kit is unable to read the disk you are trying to copy from. If you are using a backup of an original Bitstream Fontware disk, exit the kit, make a new backup and try again. If the disk is an original Fontware disk, call Bitstream Technical Support.



Message	What It Means
Choose Set Up Fontware before attempting to add typefaces.	You have tried to choose <i>Add/ Delete Fontware Typefaces</i> from the main menu before completing setup.
Choose Set Up Fontware before attempting to make fonts.	You have tried to choose <i>Make Fonts</i> from the main menu before completing setup.
Choose Set Up Fontware before attempting to view the Control Panel.	You have tried to choose <i>View Control Panel</i> from the main menu before completing setup.
Display Sizes to Printer Sizes. Not Allowed:	During <F4> Copy Sizes. You have tried to copy a font size that is allowed for your display but is <i>not</i> allowed for your printer. Depending on your application, you may not be able to select the display font.
Fontware installation failed.	During setup. This usually indicates that you do not have enough space on your system for all the Fontware Installation Kit files. Make some room on your hard disk and try <i>Set Up Fontware</i> again.
General Internal Error. Call Bitstream Technical Support.	The kit is unable to allocate memory on your system to perform certain tasks.
Insert a Fontware Typeface disk into Drive A:	During add typefaces. You have put a disk into the drive that the kit does not recognize as a typeface disk. Remove the disk from the drive, insert a typeface disk and press <Enter>.

Message	What It Means
Insert Fontware Typeface disk # 1 into Drive A:	During add typefaces. You have put a disk into Drive A that the kit does not recognize as a typeface disk. Check that the correct disk is in the drive.
Internal Error ##. Call Bitstream Technical Support.	This general class of errors indicates a problem specific to one of the Fontware Installation Kit menus.
No character set available.	An information file for the character set you have chosen may be damaged. You should set up the installation kit again.
No display devices available.	An information file for the display device you have chosen in the control panel may be damaged. You should set up the installation kit again.
No sizes to copy for this typeface.	During make fonts – edit sizes session. You have pointed to a typeface that has no size selections and pressed the <F4> key. If you want to copy sizes, first choose the typeface, then enter point sizes.
No typefaces on the system. Choose Add/Delete Fontware Typefaces.	From main menu. You have tried to choose make fonts before adding typefaces to your system.

---

**Message**

**What It Means**

---

Please put  
Installation Kit disk  
# 1 in Drive A:

During setup. You have put a Fontware  
Installation Kit disk into the drive that  
is not the first disk. Check the labels of  
your kit disks and put disk #1 into the  
drive, then close the lever.

---

Printer Sizes to  
Display Sizes. Not  
Allowed:

During <F4> Copy Sizes. You have  
tried to copy a font size that is allowed  
for your printer but is *not* allowed for  
your display. This may be because the  
display font size would be too large for  
Windows.

---

The display  
typeface already  
has sizes selected.  
Do you want to  
overwrite them?

During make fonts. You have pointed  
to a typeface and pressed <F4> to copy  
sizes from printer to display but you  
have already entered display sizes for  
that face. If you want to overwrite the  
display sizes, press Y. You can press N  
and then press <F2> to check the  
display sizes first.

---

The printer  
typeface already  
has sizes selected.  
Do you want to  
overwrite them?

During make fonts. You have pointed  
to a typeface and pressed <F4> to copy  
sizes from display to printer but you  
have already entered printer sizes for  
that face. If you want to overwrite the  
printer sizes, press Y. You can press N  
and then press <F2> to check the  
printer sizes first.

---

---

**Message****What It Means**

---

The size at left is repeated. Delete duplicates.

You have entered the indicated point size more than one time. Move the cursor to all duplicates and delete the repeated sizes.

**Note:** Printers and displays with very low resolution may not permit some integer sizes that are very close together. If you get this message and do not see exact duplicates in the point size selection, try deleting a size that is very close to the indicated size.

The size at left is too large. Maximum is xx points.

You have entered a point size that is too large for your printer or display. This message indicates the largest size permitted for the current device.

The size at left is too small. Minimum is xx points.

You have entered a point size that is too small for your printer or display. This message indicates the smallest size permitted for the current device.

Time and Space Estimates. Not enough disk space available.

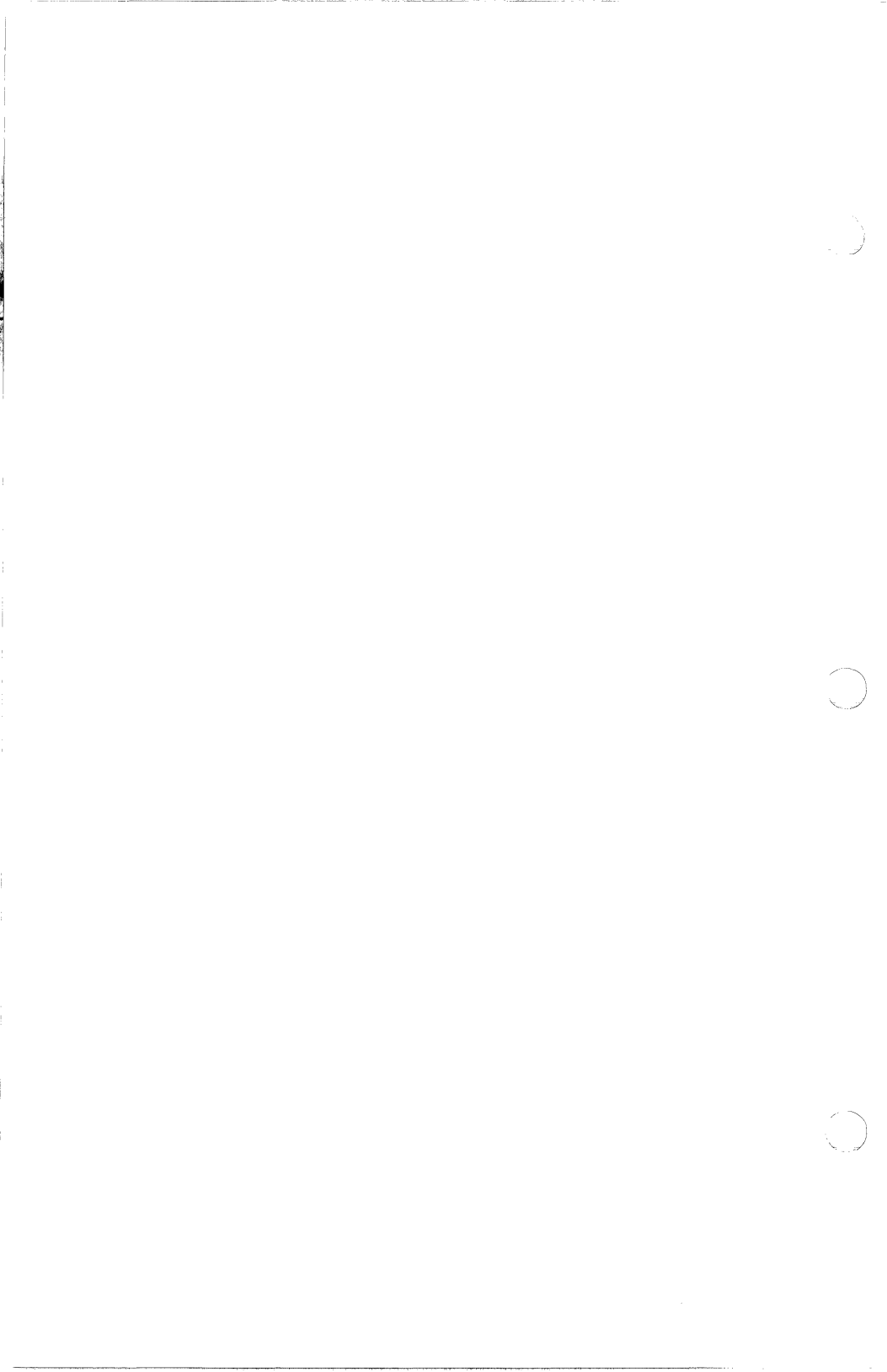
During make fonts. The kit has checked your available disk space against its space estimates and determined that there is not enough room on your disk. Press <F1> to see space estimates and space available. You should delete some font requests and check the estimates again by pressing <F6>.

---

Message	What It Means
Typeface not found. Go to Add/Delete Fontware Typefaces.	During make fonts. You have chosen a typeface that the kit does not find on your system, even though the name is listed in the make fonts window. This may happen if you have both a PostScript and a non-PostScript printer and you added the typeface when the Fontware Control Panel was set to the non-PostScript printer. Check the control panel to make sure that you have chosen a PostScript printer, then choose <i>Add/Delete Fontware Typefaces</i> and add the typeface.
Typeface will be removed from your system. Do you want to delete?	During delete typeface. All references to the chosen typeface will be erased from your hard disk. If you delete the face and later want to make fonts using the deleted typeface, you must first add it back to your system.
Unable to copy all required files.	During add typefaces. One or more files on the disk in Drive A may not be readable. If the disk is a backup, exit the kit and make a new backup. If the disk is an original, call Bitstream Technical Support.
Unable to make directory <i>directory name</i> .	During setup. The Fontware Installation Kit cannot create a directory it needs to set up. This may indicate a hardware problem.

---

<b>Message</b>	<b>What It Means</b>
Unable to make FONTWARE.BAT.	During setup. The kit cannot create a batch file that it requires. This usually means that the Fontware initialization file is damaged. You should set up the Fontware Installation Kit again.
Unable to make the Fontware directory.	During setup. You have entered a directory name that the kit cannot create on your hard disk. Press <Esc> and enter a different directory name. This may indicate a general problem with writing to your hard disk.
Unable to read xxx directory.	The kit cannot read files in one of the Fontware subdirectories: BCO, BEZ, CSD, DDF, TDF, TMP. You should set up the Fontware Installation Kit again.
Unable to read FONTWARE.INI.	You have started the kit, but it cannot read the initialization file called FONTWARE.INI. You should set up the kit again.



# **MONITERM**

5740 Green Circle Drive  
Minnetonka, Minnesota 55343  
(612) 935-4151